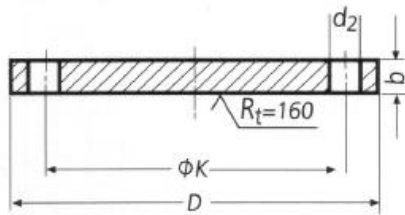
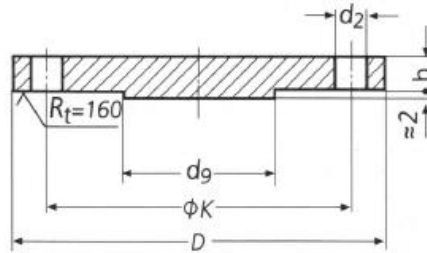


## BRIDA CIEGA DIN DIN 2527 PN40



Forma B  
 Shape B  
 Form B



Forma T (Mayores de DN 65)  
 Shape T (Bigger to DN 65)  
 Form T (ab NW 65)

Diámetro nominal Rated diameter Nennweite	Brida Flange Flansch			d <sub>g</sub> max.	Tornillos Screws Schrauben			Peso de una brida Weight of a flange Gewicht eines Flansches (7,85 Kg/dm <sup>3</sup> )		
	D	b	k		Número Number Anzahl	Rosca Thread Gewinde	d <sub>2</sub>	Forma B Shape B Form B Kg -	Forma T Shape T Form T Kg -	
10	90	16	60	55 70 90 115 140 165 185 200 235 270 300 350 375 450 515 580 660 755	4	M 12	14	0,72		
15	95	16	65					0,81		
20	105	18	75					1,24		
25	115	18	85					1,38		
32	140	18	100			2,03				
40	150	18	110			2,35				
50	165	20	125			3,20				
65	185	22	145			4,29	4,33			
80	200	24	160		5,88	5,94				
100	235	24	190		7,54	7,64				
125	270	26	220		10,8	11,0				
150	300	28	250		14,5	14,7				
(175)	350	32	295		165	12	M 27	30	22,1	22,4
200	375	34	320		190	16	M 30	33	27,2	27,6
250	450	38	385		235				43,8	44,5
300	515	42	450		285		M 33	36	63,3	64,3
350	580	46	510	330	89,5				90,8	
400	660	50	585	380	M 36	39			127	129
500	755	56	670	475	20	M 39	42	172	175	