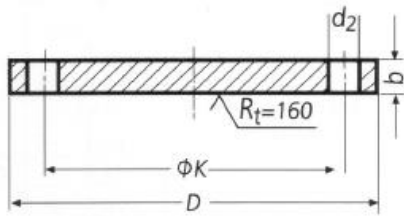
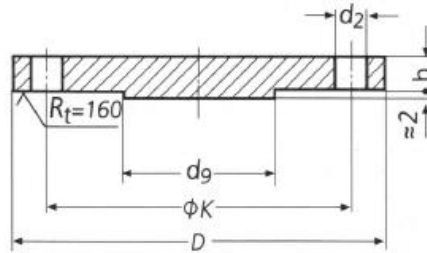


BRIDA CIEGA DIN DIN 2527 PN16



Forma B
 Shape B
 Form B



Forma T (Mayores de DN 65)
 Shape T (Bigger to DN 65)
 Form T (ab NW 65)

Diámetro nominal Rated diameter Nennweite	Brida Flange Flansch			d _g max.	Tornillos Screws schrauben			Peso de una brida Weight of a flange Gewicht eines Flansches (7,85 Kg/dm ³)		
	D	b	k		Número Number Anzahl	Rosca Thread Gewinde	d ₂	Forma B Shape B Form B Kg	Forma T Shape T Form T Kg	
10	90	14	60	55	4	M 12	14	0,63		
15	95	14	65					0,72		
20	105	16	75					1,01		
25	115	16	85					1,23		
32	140	16	100					1,80		
40	150	16	110					2,09		
50	165	18	125		8	M 16	18	2,88		
65	185	18	145					3,66		3,70
80	200	20	160					4,77		4,83
100	220	20	180					5,65		5,75
125	250	22	210					8,42		8,59
150	285	22	240					10,4		10,6
(175)	315	24	270	12	M 20	22	14,0	14,3		
200	340	24	295				16,1	16,5		
250	405	26	355				24,9	25,6		
300	460	28	410				35,1	36,1		
350	520	30	470				47,8	49,1		
400	580	32	525				63,5	65,3		
500	715	36	650	475	16	M 27	30	102	105	
					20	M 30	33			