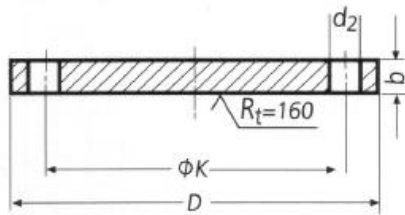
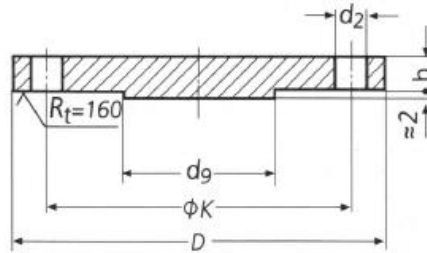


BRIDA CIEGA DIN DIN 2527 PN6



Forma B
 Shape B
 Form B



Forma T (Mayores de DN 65)
 Shape T (Bigger to DN 65)
 Form T (ab NW 65)

Diámetro nominal Rated diameter Nennweite	Brida Flange Flansch			d _g max.	Tornillos Screws schrauben			Peso de una brida Weight of a flange Gewicht eines Flansches (7,85 Kg/dm ³)		
	D	b	k		Número Number Anzahl	Rosca Thread Gewinde	d ₂	Forma B Shape B Form B Kg	Forma T Shape T Form T Kg	
10	75	12	50		4	M 10	11	0,38		
15	80	12	55					0,44		
20	90	14	65					0,65		
25	100	14	75					0,82		
32	120	14	90			1,17	M 12	14		1,39
40	130	14	100			1,62				
50	140	14	110			2,44				
65	160	14	130	55	8	M 16	18	2,48		
80	190	16	150	70				3,43	3,49	
100	210	16	170	90				4,76	4,86	
125	240	18	200	115				6,11	6,28	
150	265	18	225	140				7,51	7,75	
(175)	295	20	255	165				10,4	10,7	
200	320	20	280	190				12,3	12,7	
250	375	22	335	235	18,3	19,0	12	M 20	22	
300	440	22	395	285	25,3	26,3				
350	490	22	445	330	31,6	32,9				
400	540	22	495	380	38,4	40,2				
500	645	24	600	475	60,4	63,2				