



www.ferrosguma.com





INFORMACIÓN

Los accesorios de este catálogo son fabricados para alcanzar el 90% de la carga de rotura de los cables estándar disponibles en el mercado. Datos facilitados en la tabla adjunta.

Para garantizar seguridad en el montaje, debe calcular un factor de seguridad de 2-3 en construcción estática y un mínimo de 4 en construcción dinámica.

Cuando planeamos una construcción con cable, el límite de carga de rotura tiene que ser calculado teniendo en cuenta cómo trabaja la carga, así como ésta determinará la medida mínima del diámetro del cable y cómo tiene que ser el montaje del cable.

Como regla general de rotura de cargas, no se debe exceder del 25% de la carga de rotura que figura en la tabla de este catálogo.

TABLA DE CARGAS DE ROTURA

Cable mm	Rosca m	Carga rotura kg
2,0	M4	500
2,0	M5	800
2,5	M5	800
3,0	M6	1250
4,0	M8	1300
5,0	M10	2600
6,0	M12	5100
7,0	M14	5900
8,0	M16	8000
10,0	M20	13000
12,0	M20	13000
14,0	M22	17000
16,0	M24	20000
19,0	M27	25500
22,0	M30	31000
26,0	M36	43000



ESTAMPAR



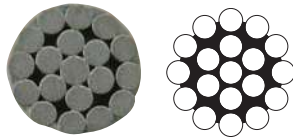
PRENSAR



PRENSAR



ATORNILLAR



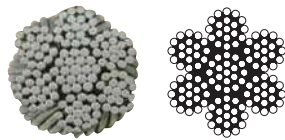
cable rígido
de construcción

CABLE DE ACERO INOXIDABLE

Acero inoxidable - **AISI 316**

1 x 19 AISI 316 BS MA 29 : 1982

ART. NO.	DIM. MM	RESISTENCIA A LA TRACCIÓN KN	CA. KG/100
704WR11902	2	3.1	2.0
704WR11925	2.5	4.9	3.1
704WR11903	3	7.1	4.5
704WR11904	4	12.6	8.0
704WR11905	5	19.6	12.4
704WR11906	6	28.2	17.9
704WR11907	7	34.8	24.3
704WR11908	8	45.5	31.8
704WR11910	10	71.1	49.7

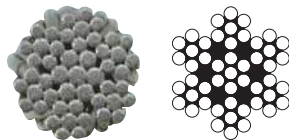


cable muy flexible
de construcción

7 x 19 AISI 316 BS MA 29 : 1982

ART. NO.	DIM. MM	RESISTENCIA A LA TRACCIÓN KN	CA. KG/100
704WR71902#	2	2.1	1.6
704WR71925#	2.5	3.3	2.4
704WR71903	3	5.0	3.8
704WR71904	4	8.9	6.5
704WR71905	5	13.9	9.1
704WR71906	6	20.0	13.8
704WR71908	8	35.6	23.9
704WR71910	10	55.6	40.3

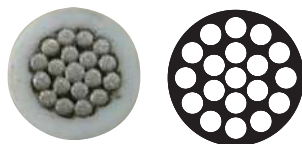
= Según DIN 3060



cable flexible
de construcción

7 x 7 AISI 316 BS MA 29 : 1982

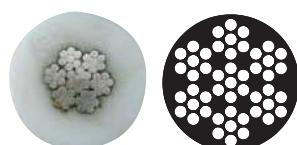
ART. NO.	DIM. MM	RESISTENCIA A LA TRACCIÓN KN	CA. KG/100
704WR70702	2	2.4	1.7
704WR70725	2.5	3.7	2.6
704WR70703	3	5.3	3.9
704WR70704	4	9.5	7
704WR70705	5	14.8	10.5
704WR70706	6	21.4	14.8
704WR70708	8	38.0	25.5
704WR70710	10	59.3	38.8



cable rígido
de construcción

1 x 19 AISI 316 REVESTIDO BLANCO

CAT. NO.	DIM. MM	RESISTENCIA A LA TRACCIÓN KN	CA. KG/100
704CW119460	4,0 - 6,0	12.6	9.5



cable flexible
de construcción

7 x 7 AISI 316 REVESTIDO BLANCO

CAT. NO.	DIM. MM	RESISTENCIA A LA TRACCIÓN KN	CA. KG/100
704CW707460	4,0 - 6,0	9.5	8.8
704CW707480	4,0 - 8,0	9.5	9.5

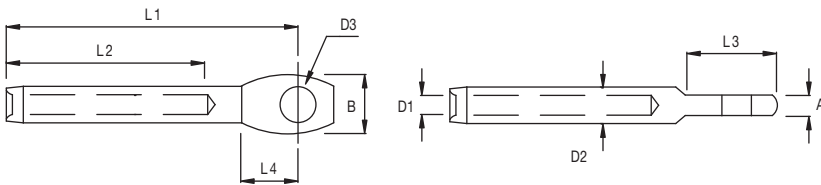


CÁNCAMOS CORTOS PARA PRENSAR

Acero inoxidable - **AISI 316**

CAT. NO.	CABLE DIM.	D1	D2	D3	L1	L2	L3	L4	A	B	KG/100
704A200503	3,0 1/8"	3.5	5.5	5.3	36	25	11	6.0	2.50	9	0.5
704A200504	4,0 5/32"	4.4	6.4	5.3	38	25	12	6.5	3.00	10	0.7
704A200505	5,0 3/16"	5.3	7.5	5.3	43	30	13	7.0	3.75	11	1.0
704A200606	6,0 -	6.5	9.0	6.3	62	40	16	8.5	4.50	14	1.9

Carga de rotura 50% del cable 1x19

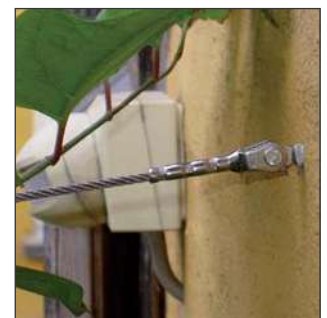
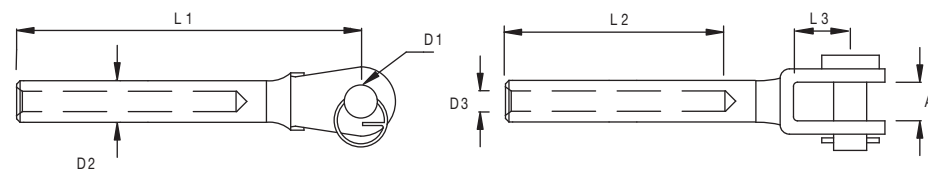


TERMINALES DE HORQUILLA SOLDADA CORTOS PARA PRENSAR

Acero inoxidable pulido - **AISI 316**

ART. NO.	CABLE	L1	L2	L3	D1	D2	D3	A	KG/100
704A360503	3	50	25	12,0	5,0	5,50	3,5	7,5	1,0
704A360504	4	50	25	12,0	5,0	6,35	4,4	7,5	1,5
704A360605	5	58	30	13,0	6,0	7,50	5,3	9,5	2,2
704A360806	6	72	40	15,0	8,0	9,00	6,5	11,0	3,7
704A360808	8	85	50	15,0	8,0	12,58	8,4	11,0	8,0
704A361010	10	106	60	19,5	9,5	16,00	10,5	12,5	14,1

Carga de rotura 50% del cable 1x19



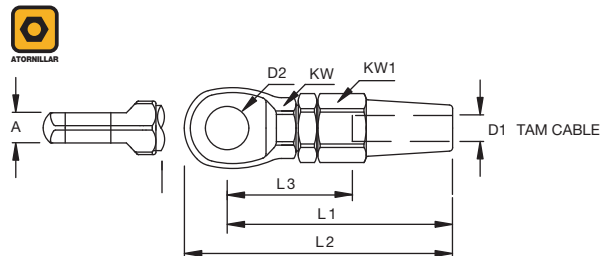


TERMINALES MANUALES DE OJILLO

Acero inoxidable pulido - **AISI 316**

ART. NO.	CABLE	DIM.	A	L1	L2	L3	D2	KW	KW1	B.L.	KG	KG/100
704821903	3	1/18"	5.5	50	58	26.5	6.3	10	12	750	4.0	
704821904	4	5/32"	7	58	68	31.0	8.3	13	14	1500	7.3	
704821905	5	-	8	70	81	37.0	10.3	14	16	2180	9.8	
704821906	6	1/4"	9	83	97	45.0	12.3	17	19	3700	15.0	
704821907	7	9/32"	9	89	105	50.5	12.3	18	21	4700	21.2	
704821908	8	5/16"	10	103	121	52.5	14.3	19	24	5600	28.1	
704821910	10	-	13	116	135	65.0	16.3	24	27	8300	46.0	
704821912	12	-	15	137	160	71.5	19.5	27	32	12000	72.0	
704821914	14	-	18	160	185	85.0	22	30	36	14000	110.0	
704821916	16	-	20	170	197	98.0	25	32	41	23000	160.0	

Nota: todas las cargas de rotura están determinadas por las mordazas y cáncamos

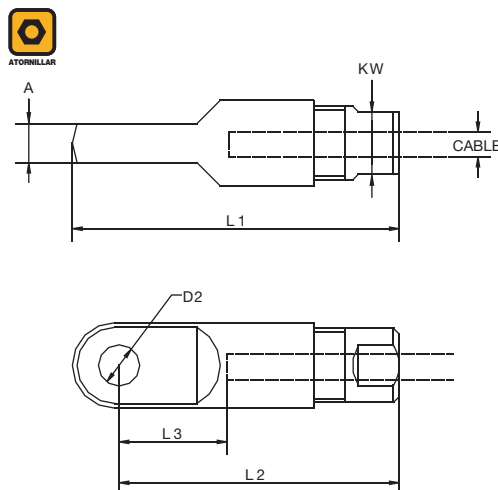


TERMINALES MANUALES CORTOS DE OJILLO

Acero inoxidable pulido - **AISI 316**

ART. NO.	CABLE	DIM.	A	L1	L2	L3	D2	KW	KG/100
704A821903	3	1/18"	5	42	36.0	13.0	5.3	8	0
704A821904	4	5/32"	6	45	37.5	14.5	5.3	10	0
704A821905	5	-	6	53	44.5	18.5	6.3	12	0
704A821906	6	1/4"	8	60	50.5	21.5	8.3	14	0

Carga de rotura 50% del cable 1x19





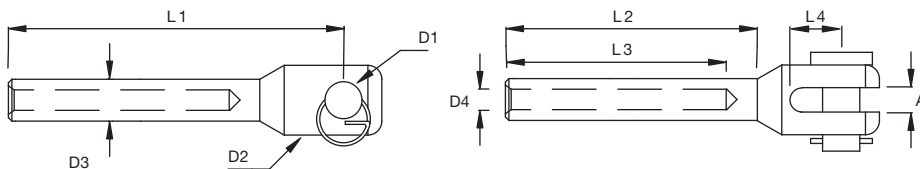
TERMINALES DE HORQUILLA MECANIZADA CORTOS PARA PRENSAR

Acero inoxidable - **AISI 316**

ART. NO. CABLE L1 L2 L3 L4 D1 D2 D3 D4 A KG/100

704A390503	3	41	30	25,0	6,0	5,00	11	5,5	3,5	5,5	1,03
704A390504	4	43	31	25,0	8,5	5,00	13	6.35	4,4	6,5	1,43
704A390505	5	51	36	30,0	8,0	5,00	13	7,5	5,3	6,5	2,23
704A390606	6	67	42	40,0	11,0	6,00	16	9	6,5	8,5	3,66

Carga de rotura 50% del cable 1x19



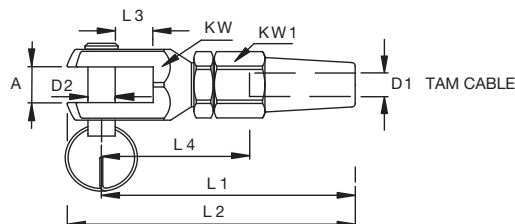
TERMINAL MANUAL DE HORQUILLA

Acero inoxidable pulido - **AISI 316**

ART. NO. A L1 L2 L3 L4 CABLE DIM. D2 KW KW1 B.L. KG KG/100

704840603	6	55	63	8	29.0	3	1/8"	6	14	12	750	5.5
704840804	8	62	73	8	35.0	4	5/32"	8	19	14	1500	7.3
704841005	10	72	83	10	42.0	5	-	10	22	16	2180	15
704841206	12	82	95	12	47.5	6	1/4"	12	27	19	3700	23
704841207	12	102	115	13	54.5	7	9/32"	12	29	21	4700	29
704841408	14	103	118	14	58.0	8	5/16"	14	30	24	5600	38
704841610	16	117	135	16	70.0	10	-	16	36	27	8300	63
704841912	18	142	162	16	75.0	12	-	19	42	32	12000	97
704842214	21	162	191	19	88.0	14	-	22	46	36	14000	135
704842516	23	184	217	22	102.0	16	-	25	55	41	23000	215

Nota: todas las cargas de rotura están determinadas por las mordazas y cáncamos



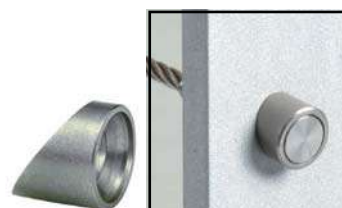
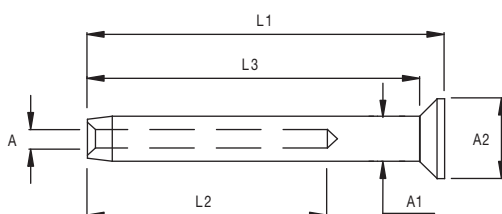


TERMINAL CÓNICO

Acero inoxidable - **AISI 316**

ART. NO.	CABLE	DIM.	L1	L2	L3	A	A1	A2	KG/100
A110003	3,0	1/8"	35	25	32.5	3.5	5.5	8	0.5
A110004	4,0	5/32"	35	25	32.0	4.4	6.4	10	0.7
A110005	5,0	3/16"	41	30	38.0	5.3	7.5	12	1,0
A110006	6,0	-	52	40	48.5	6.5	9,0	14	1.9

Carga de rotura 50% del cable 1x19



Compensador de ángulos para terminales cónicos

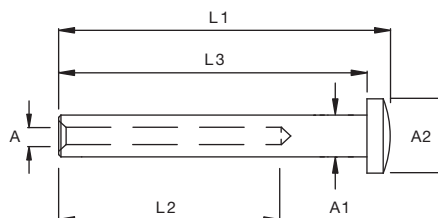


TERMINAL DE CABEZA ABOMBADA

Acero inoxidable - **AISI 316**

ART. NO.	CABLE	DIM.	L1	L2	L3	A	A1	A2	KG/100
A100003	3,0	1/8"	35	25	32.0	3.5	5.5	8	0.5
A100004	4,0	5/32"	35	25	32.0	4.4	6.4	10	0.7
A100005	5,0	3/16"	41	30	37.0	5.3	7.5	12	1,0
A100006	6,0	-	52	40	47.0	6.5	9,0	14	1.9

Carga de rotura 50% del cable 1x19



Bola para cabeza abombada



TERMINAL MANUAL DE HORQUILLA - PEQUEÑO

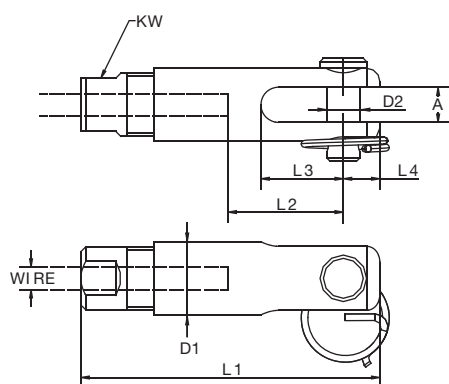
Acero inoxidable pulido - **AISI 316**

ART. NO.	CABLE DIM.	A	L1	L2	L3	L4	D1	D2	KW	KG/100
704A840503	3 1/8"	5.3	45	16.5	12	5.5	11	5	8	0
704A840504	4 5/32"	6.3	48	18	14	7.0	15	5	10	0
704A840605	5 -	6.3	56	22	18	8.0	16	6	12	0
704A840806	6 1/4"	8.3	62	24.5	20	8.5	18	8	14	0

Carga de rotura 50% del cable 1x19



ATORNILLAR



TERMINAL ROSCADO CORTO

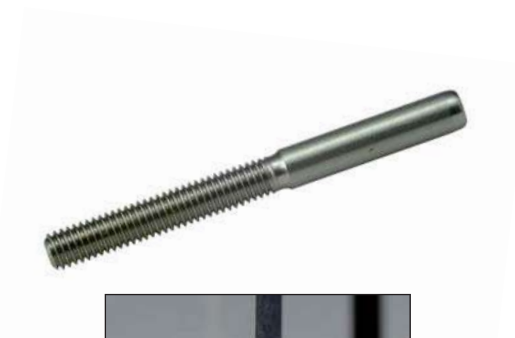
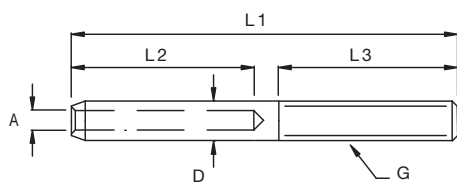
Acero inoxidable - **AISI 316**

NO. DRCHA.	NO. IZQDA.	G	CABLE DIM.	L1	L2	L3	D	A	KG/100
704A180503	704A190503	M5	3 1/8"	60.0	25.0	30	5.5	3.5	0.8
704A180604	704A190604	M6	4 5/32"	65.0	25.0	35	6.4	4.4	1.2
704A180605	704A190605	M6	5 3/16"	73.0	30.0	35	7.5	5.3	1.7
704A180806	704A190806	M8	6 -	88.0	40.0	40	9.0	6.5	2.6
704A181008	704A191008	M10	8 5/16"	103.0	50.0	45	12.6	8.4	5.8
704A181210	704A191210	M12	10 -	118.0	60.0	50.0	16.0	10.5	10.0

Carga de rotura 50% del cable 1x19



ESTAMPAR PRENSAR PRENSAR



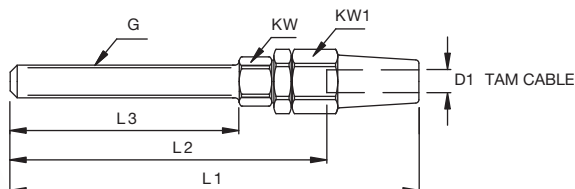


TERMINAL MANUAL ROSCADO

Acero inoxidable pulido - **AISI 316**

NO. DRCHA.	NO. IZQDA.	CABLE G	L1	L2	L3	KW	KW1	B.L.	KG	KG/100
704800305	704810305	3 M5	79	58	42	10	12	750	4,2	
704800306	704810306	3 M6	85	63	47	10	12	750	4,5	
704800406	704810406	4 M6	92	63	47	12	14	1500	5,6	
704800408	704810408	4 M8	102	72	57	12	14	1500	6,6	
704800508	704810508	5 M8	111	78	57	13	16	2180	9,0	
704800510	704810510	5 M10	117	84	63	13	16	2180	10,0	
704800610	704810610	6 M10	128	90	63	16	19	3700	15,0	
704800612	704810612	6 M12	145	107	80	16	19	3700	17,0	
704800712	704810712	7 M12	153	110	80	18	21	4700	22,0	
704800714	704810714	7 M14	162	119	89	18	21	4700	25,0	
704800812	704810812	8 M12	162	113	80	19	24	5600	28,0	
704800814	704810814	8 M14	171	122	89	19	24	5600	31,0	
704800816	704810816	8 M16	182	133	100	19	24	5600	40,0	
704801016	704811016	10 M16	190	139	100	24	27	8300	48,0	
704801220	704811220	12 M20	227	159	120	27	32	12000	79,0	
704801422	704811422	14 M22	264	191	140	30	36	14000	124,0	
704801624	704811624	16 M24	308	227	170	32	41	23000	175,0	

Nota: todas las cargas de rotura están determinadas por las mordazas y rosca

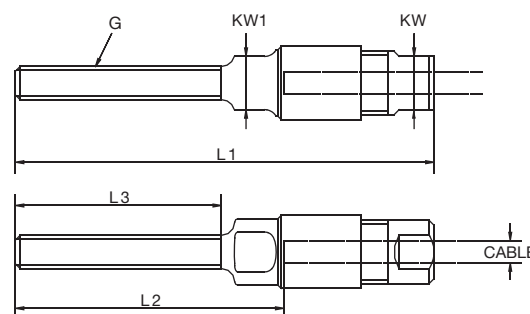


TERMINAL MANUAL ROSCADO - CORTO

Acero inoxidable pulido - **AISI 316**

NO. DRCHA.	CABLE G	L1	L2	L3	KW	KW1	KG/100
704A800305	3 M5	63.0	40.0	31	8	8	0.0
704A800406	4 M6	69.0	46.0	35	10	10	0.0
704A800506	5 M6	73.0	47.0	35	12	11	0.0
704A800608	6 M8	83.5	54.5	41	14	13	0.0

Carga de rotura 50% del cable 1x19





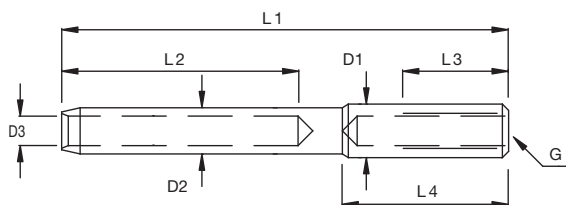
TERMINAL ROSCADO INTERIOR - CORTO

Acero inoxidable - **AISI 316**

NO. DRCHA. NO. IZQDA. G CABLE DIM. L1 L2 L3 L4 D1 D2 D3 KG/100

704A140503	704A150503	M5	3	1/8"	65	25	20	35	7.13	5.5	3.5	1.2
704A140604	704A150604	M6	4	5/32"	65	25	20	35	8.0	6.4	4.4	1.7
704A140605	704A150605	M6	5	3/16"	70	30	20	30	8.0	7.5	5.3	2.6
704A140806	704A150806	M8	6	-	85	40	25	40	11.0	9.0	6.5	6.3

Carga de rotura 50% del cable 1x19



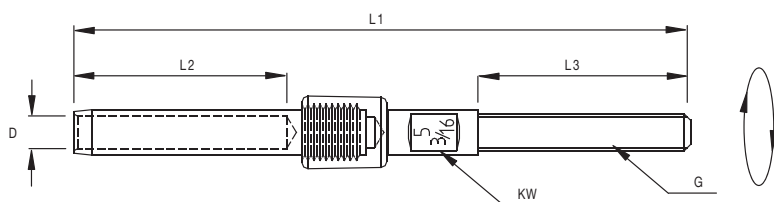
TERMINAL GIRATORIO

Acero inoxidable - **AISI 316**

ART. NO. CABLE G L1 L2 L3 D KW KG/100

704A900305	3	M5	81	30	30	5.5	4.5	1.4
704A900406	4	M6	88	31	35	6.4	5	1.9
704A900506	5	M6	100	37	35	7.5	6	2.8
704A900608	6	M8	119	48	40	9.0	7	5.0

Carga de rotura 50% del cable 1x19



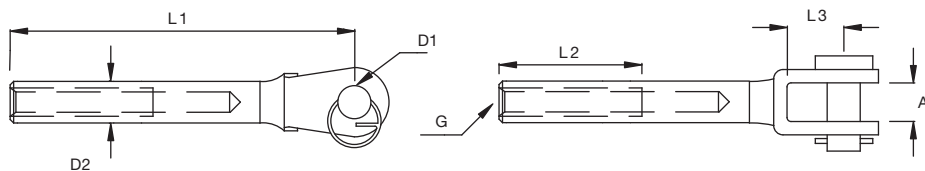


HORQUILLA SOLDADA ROSCADA INTERIOR - PEQUEÑA

Acero inoxidable - **AISI 316**

NO. DRCHA.	NO. IZQDA.	CABLE	G	L1	L2	L3	D1	D2	A	KG/100
704A340503	704A350503	3.0	M5	59	25.0	12.0	5.0	7.1	7.5	1.4
704A340504	704A350504	4.0	M6	67	30.0	12.0	5.0	8.0	7.5	1.9
704A340605	704A350605	5.0	M6	68	30.0	13.0	6.0	8.0	9.5	2.2
704A340806	704A350806	6.0	M8	79	35.0	15.0	8.0	11.0	11	4.5

Carga de rotura 50% del cable 1x19

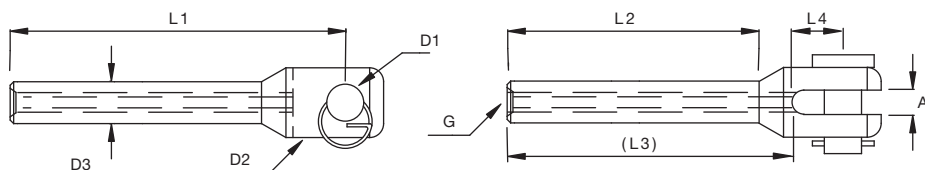


HORQUILLA MECANIZADA ROSCADA INTERIOR - PEQUEÑA

Acero inoxidable - **AISI 316**

NO. DRCHA.	NO. IZQDA.	G	L1	L2	L3	L4	D1	D2	D3	A	KG/100
704A370503	704A380503	M5	34	24	27	6,0	5	11	8	5,5	1,4
704A370604	704A380604	M6	44	30	35	8,5	5	13	8	6,5	1,9
704A370806	704A380806	M8	52	35	40	11,0	6	16	11	8,5	2,2

Carga de rotura 50% del cable 1x19



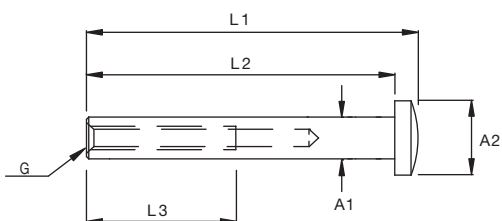


TERMINAL DE CABEZA ABOMBADA ROSCADO INTERIOR

Acero inoxidable - **AISI 316**

ART. NO. L1 L2 L3 G A1 A2 KG/100

704A170503	43	40.0	25.0	M5	7.13	10.0	0.5
704A170604	49	45.0	30.0	M6	8.00	11.5	0.7
704A170806	60	55.0	35.0	M8	11.00	14.0	1.0

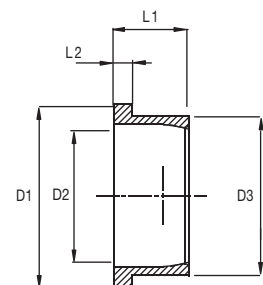


CAZOLETA PARA TERMINAL DE BOLA

Acero inoxidable - **AISI 316**

ART. NO. CABLE DIM. D1 D2 D3 L1 L2 KG/100

704A292008	3,0 + 4,0 + 5,0	27,0	20,0	23,0	10,0	2,0	1,05
704A292510	6	32,0	25,0	28,0	13,0	3,0	1,80

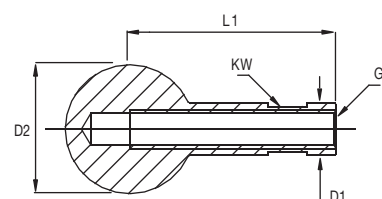


COMPENSADOR DE ÁNGULO FLEXIBLE

Acero inoxidable - **AISI 316**

ART. NO. CABLE D1 D2 L1 G NV KG/100

704A232005	3	8	20.0	32.0	M5	7	3.7
704A232006	4,0+5,0	8	20.0	32.0	M6	7	3.4
704A232508	6	11	25.0	36.0	M8	10	6.8



Rotación= 360°
Ángulo flexible= 90°



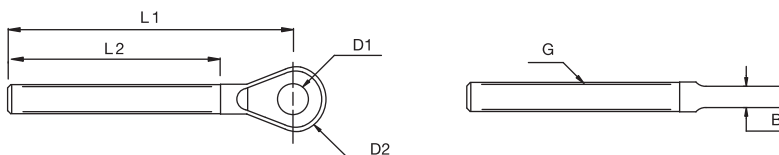


CÁNCAMO ROSCADO

Acero inoxidable pulido - **AISI 316**

NO. DRCHA.	NO. IZQDA.	G	D1	D2	L1	L2	B	B.L.	KG	KG/100
704021904	704031904	M4	4.3	10	50	35	3	500		0.5
704021905	704031905	M5	5.5	12	63	41	3	800		0.9
704021906	704031906	M6	6.5	14	65	47	4	1250		1.5
704021908	704031908	M8	8.5	17	78	57	5	2350		3.1
704021910	704031910	M10	10.5	22	90	63	6	3500		5.1
704021912	704031912	M12	13.0	25	110	80	8	5100		10.1
704021914	704031914	M14	13.0	28	124	90	9	5900		14.1
704021916	704031916	M16	14.5	31	133	100	10	8000		20.4
704021920	704031920	M20	19.5	40	164	120	15	13000		40.6
704021922X	704031922X	M22	23.0	46	196	140	18	17000		69.0
704021924X	704031924X	M24	26.0	53	230	170	20	20000		105.0
704021927X	704031927X	M27	28.5	65	247	180	25	25500		153.0
704021930X	704031930X	M30	33.0	70	274	200	30	31000		204.0
704021936X	704031936X	M36	36.0	80	295	220	30	43000		296.0

Nota: todas las cargas de rotura están determinadas por los ojales y rosca

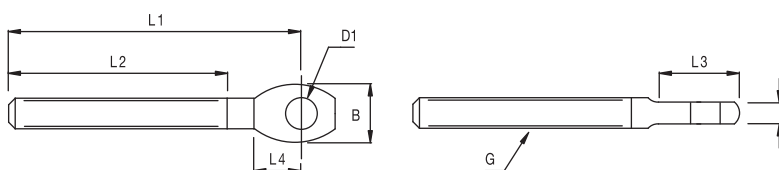
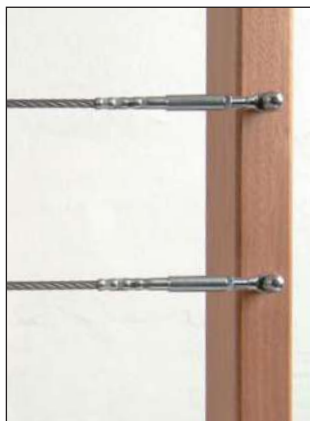


CÁNCAMO ROSCADO - CORTO

Acero inoxidable - **AISI 316**

NO. DRCHA.	NO. IZQDA.	G	D1	L1	L2	L3	L4	A	B	KG/100
704A440505	704A450505	M5	5.3	41	30	11	6.0	2.5	9	0.6
704A440506	704A450506	M6	5.3	48	35	13	7.0	3.8	11	1.2
704A440606	704A450606	M6	6.3	48	35	13	7.0	3.8	11	1.2
704A440608	704A450608	M8	6.3	57	40	16	8.5	4.5	15	2.2

Carga de rotura 50% del cable 1x19





HORQUILLA MECANIZADA ROSCADA - CORTA

Acero inoxidable - **AISI 316**

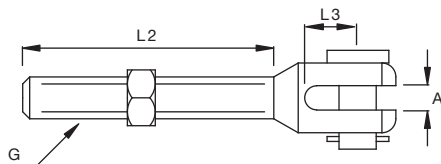
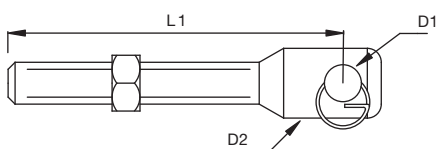
NO. DRCHA. NO. IZQDA. G L1 L2 L3 D1 D2 A KG/100

704A421205 704A431205 M5 42,5 31,0 6,0 5,0 11,0 5,5 1,1

704A421206 704A431206 M6 48,0 36,0 8,5 5,0 13,0 6,5 1,4

704A421208 704A431208 M8 61,0 42,0 11,0 6,0 16,0 8,5 1,9

Carga de rotura 50% del cable 1x19



HORQUILLA SOLDADA CORTA - CORTA

Acero inoxidable - **AISI 316**

NO. DRCHA. NO. IZQDA. G L1 L2 L3 D1 A KG/100

704A320503 704A330503 M5 49 30 12 5 7.5 1.4

704A320604 704A330604 M6 54 35 12 5 7.5 2.0

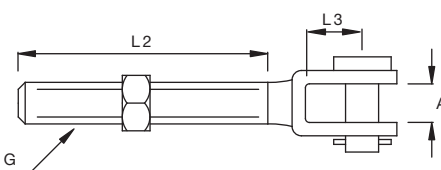
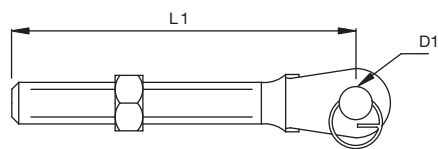
704A320605 704A330605 M6 56 35 13 6 9.5 2.5

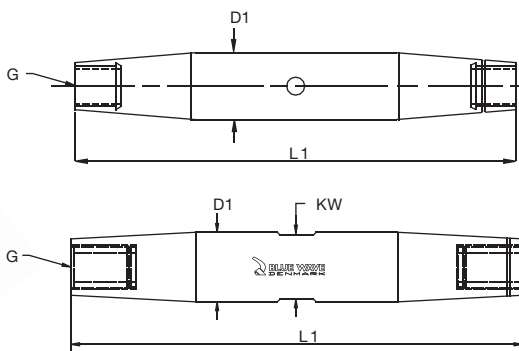
704A320806 704A330806 M8 65 40 15 8 11.0 3.5

704A320808 704A330808 M10 72 45 15 8.0 11.0 6.4

704A321010 704A331010 M12 82 50 19 9.5 12.5 11.0

Carga de rotura 50% del cable 1x19





CUERPO TENSOR

Acero inoxidable - **AISI 316**

ART. NO. G L1 D1 KG/100

704A011205 M5 60 8 0,9

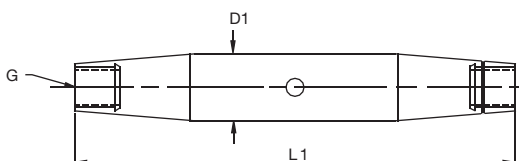
704A011206 M6 65 10 1,7

704A011208 M8 80 14 4,3

704A011210 M10 90 17 7,0

704A011212 M12 100 23 11,3

Carga de rotura 50% del cable 1x19



VARILLA ROSCADA SIMPLE

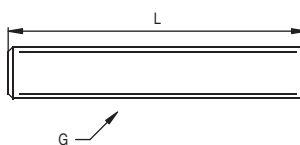
Acero inoxidable - **AISI 316**

ART. NO. L G KG/100

704A400503 38 M5 1

704A400604 45 M6 1

704A400806 52 M8 2





VARILLA ROSCADA DOBLE

Acero inoxidable pulido - **AISI 316**

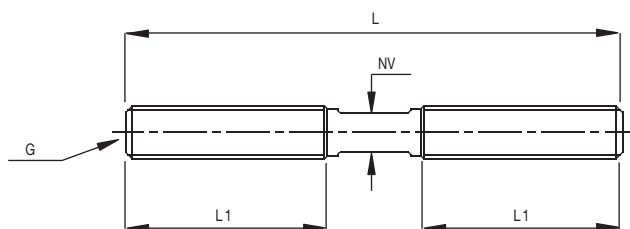
ART. NO.	L	L1	NV	G	KG/100
704900305HV	70	30	3	M5	1.0
704900406HV	106	48	4.5	M6	1.9
704900408HV	129	57	6	M8	4.1
704900610HV	145	63	7	M10	7.1
704900712HV	180	80	9	M12	13.0
704900814HV	198	89	11	M14	19.6



VARILLA ROSCADA DOBLE - CORTA

Acero inoxidable - **AISI 316**

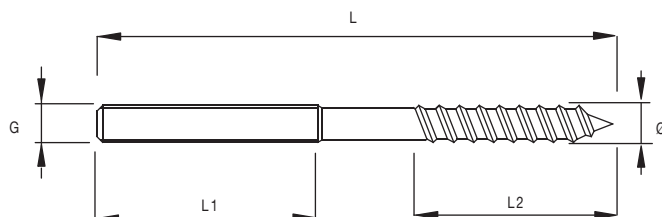
ART. NO.	L	L1	NV	G	KG/100
704A392405	60	24	3	M5	0.7
704A392706	66	27	4	M6	1.2
704A393008	75	30	6	M8	2.3



TORNILLO ROSCADO DUAL

Acero inoxidable - **AISI 304**

NO. DRCHA.	NO. IZQDA.	L	L1	L2	Ø	G	KG/100
704A410503	704A420503	70	30	24	5	M5	0.8
704A410604	704A420604	80	35	40	6	M6	1.3
704A4163560	704A4263560	100	35	60	6	M6	1.7
704A410806	704A420806	90	40	40	8	M8	2.6



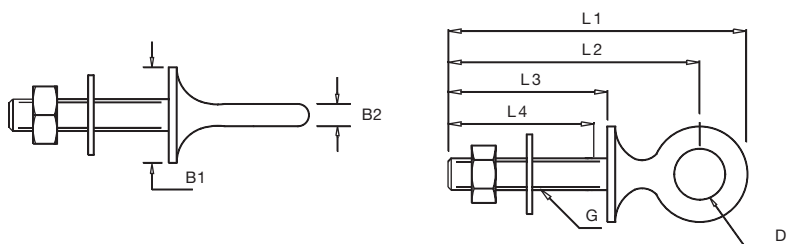


CÁNCAMO ROSCADO SOLDADO

Acero inoxidable pulido - **AISI 304**

ART. NO.	G	L1	L2	L3	B1	B2	D	L4	B.L.	KG	KG/100
704370630	M6	57	46	30	25	5,0	13	30	1300	1,8	
704370640	M6	66	56	40	25	5,0	13	40	1300	2,8	
704370650	M6	76	62	50	25	5,0	13	50	1300	3,0	
704370660	M6	87	76	60	25	5,0	13	60	1300	2,6	
704370600	M6	126	115	100	25	5,0	13	95	1300	3,7	
704370835	M8	66	53	35	25	6,0	15	35	2400	3,8	
704370850	M8	80	68	50	25	6,0	15	50	2400	4,9	
704370880	M8	110	98	80	25	6,0	15	75	2400	5,5	
704370800	M8	130	118	100	25	6,0	15	75	2400	6,5	
704371050	M10	85	70	50	30	7,0	16	50	3500	8,7	
704371000	M10	135	120	100	30	7,0	16	95	3500	11,0	
704371250	M12	90	74	50	30	6,0	18	45	4500	10,2	
704371210	M12	140	124	100	30	9,0	18	85	4500	15,0	
704371216	M12	200	184	160	30	9,0	18	85	4500	19,0	

Nota: todas las cargas de rotura están determinadas por los ojales y rosca

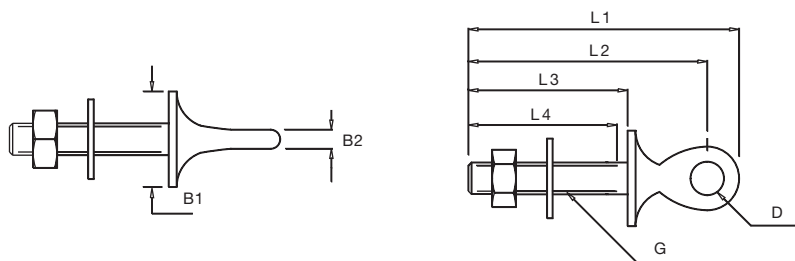


CÁNCAMO FORJADO

Acero inoxidable pulido - **AISI 304**

ART. NO.	G	L1	L2	L3	B1	B2	D	L4	B.L.	KG	KG/100
704310630	M6	53	46	30	25.0	4.0	6.5	30	1300	1.3	
704310660	M6	83	76	60	25.0	4.0	6.5	60	1300	2.1	
704310835	M8	65	58	35	25.0	5.0	8.5	35	2400	3.3	
704310880	M8	110	104	80	25.0	5.0	8.5	75	2400	5.0	
704311050	M10	87	75	50	30.0	6.0	10.5	50	3500	8.2	
704311000	M10	137	125	100	30.0	6.0	10.5	85	3500	11.0	

Nota: todas las cargas de rotura están determinadas por los ojales y rosca



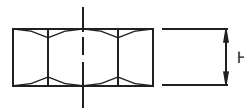
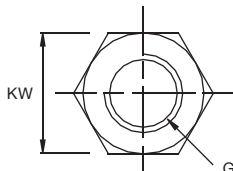


TUERCA CIEGA

Acero inoxidable pulido - **AISI 316**

NO. DRCHA. NO. IZQDA. G NV H KG/100

704041204	704051204	M4	7	3	0.10
704041205	704051205	M5	8	4	0.10
704041206	704051206	M6	8	4	0.10
704041208	704051208	M8	10	5	0.15
704041210	704051210	M10	13	7	0.25
704041212	704051212	M12	17	8	0.70
704041214	704051214	M14	19	10	1.30
704041216	704051216	M16	22	11	2.00
704041220	704051220	M20	24	13	2.25
704041222	704051222	M22	30	17	3.50
704041224	704051224	M24	36	18	8.80
704041227	704051227	M27	41	22	16.0
704041230	704051230	M30	46	24	17.0
704041236	704051236	M36	55	29	39.0

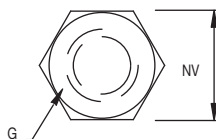


TUERCA

Acero inoxidable - **AISI 304**

ART. NO. NV G KG/100

704A040503	8	M5	0.2
704A040604	10	M6	0.4
704A040806	13	M8	0.9

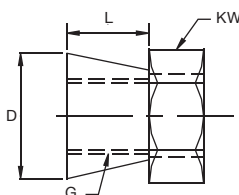


TUERCA DE SEGURIDAD

Acero inoxidable pulido - **AISI 316**

ART. NO. G L D NV KG/100 ROTURA

704044306	M6	7,0	12	12	0,6	20Nm
704044308	M8	8,5	15	16	1,0	40Nm
704044310	M10	9,0	17	17	1,3	50Nm
704044312	M12	10,5	20	22	2,3	50Nm

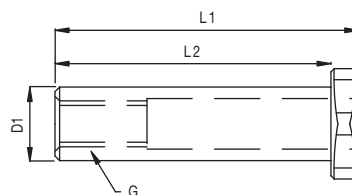
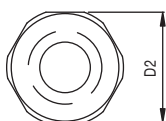


TERMINAL ROSCA

Acero inoxidable - **AISI 316**

CAT. NO. D1 D2 L1 L2 G KG/100

704A160503	8	12.0	33	30	M5	0.8
704A160604	8	12.0	39	35	M6	0.9
704A160806	10	14.0	45	40	M8	1.2
704A161008	13	17.0	50	45	M10	2.5



Carga de rotura 50% del cable 1x19



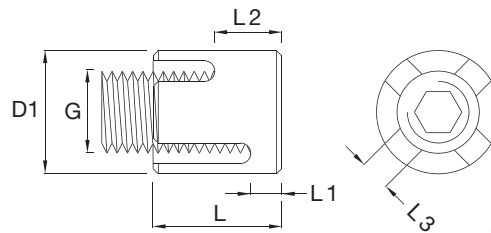
CLIP DE MALLA O RED

Acero inoxidable - **AISI 316**

ART. NO.	CABLE G	L	L1	L2	L3	D1	KG/100	
704A600003C	3	M10	19	5	8	3,2	17	2,4
704A600004C	4	M12	21	5	8	4,2	20	3,6
704A600005C	5	M12	23	5	10	5,2	20	3,6
704A600006C	6	M12	25	5	10	6,2	20	5,8
704A600008O	8	M16	36	6	14	8,3	24	8,8



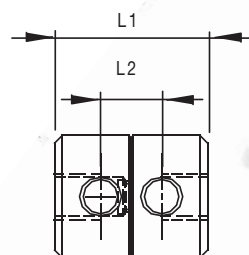
ART. NO.	CABLE G	L	L1	L2	L3	D1	KG/100	
704A610003C	3	M10	19	5	8	3,2	17	2,4
704A610004C	4	M12	21	5	8	4,2	20	3,6
704A610005C	5	M12	23	5	10	5,2	20	3,6
704A610006C	6	M12	25	5	10	6,2	20	5,6
704A610008O	8	M16	36	6	14	8,3	24	8,5



CLIP FLEXIBLE DE MALLA O RED

Acero inoxidable - **AISI 316**

ART. NO.	CABLE	L1	L2	ROTACIÓN	KG/100
704022404	4	20	8	360°	2.7
704022406	6	24	10	360°	2.9



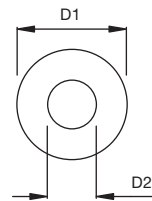
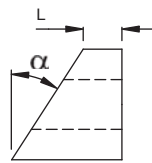


COMPENSADOR DE ÁNGULO

Acero inoxidable - **AISI 303**

ART. NO. GRADOS D1 D2 L KG/100

704A302003	20	11,0	5,0	5,0	0,4
704A302503	25	11,0	5,0	5,0	0,4
704A303003	30	11,0	5,0	5,0	0,5
704A303503	35	11,0	5,0	5,0	0,6
704A304003	40	11,0	5,0	5,0	0,6
704A302004	20	13,0	6,0	5,0	0,6
704A302504	25	13,0	6,0	5,0	0,7
704A303004	30	13,0	6,0	5,0	0,8
704A303504	35	13,0	6,0	5,0	0,8
704A304004	40	13,0	6,0	5,0	0,9
704A302006	20	17,0	8,2	5,0	1,2
704A302506	25	17,0	8,2	5,0	1,2
704A303006	30	17,0	8,2	5,0	1,3
704A303506	35	17,0	8,2	5,0	1,5
704A304006	40	17,0	8,2	5,0	1,6

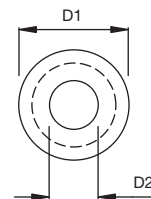
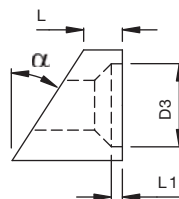


COMPENSADOR DE ÁNGULO PARA TERMINALES CÓNICOS

Acero inoxidable - **AISI 303**

ART. NO. GRADOS D1 D2 D3 L L1 KG/100

704A312003	20	11	6	8,3	5,0	1,0	0,4
704A312503	25	11	6	8,3	5,0	1,0	0,4
704A313003	30	11	6	8,3	5,0	1,0	0,5
704A313503	35	11	6	8,3	5,0	1,0	0,6
704A314003	40	11	6	8,3	5,0	1,0	0,6
704A312004	20	13	7	10,3	5,0	1,0	0,6
704A312504	25	13	7	10,3	5,0	1,0	0,7
704A313004	30	13	7	10	5,0	1,0	0,8
704A313504	35	13	7	10	5,0	1,0	0,8
704A314004	40	13	7	10	5,0	1,0	0,9
704A312005	20	14	8	12	5,0	1,0	0,8
704A312505	25	14	8	12	5,0	1,0	0,9
704A313005	30	14	8	12	5,0	1,0	0,9
704A313505	35	14	8	12	5,0	1,0	1,0
704A314005	40	14	8	12	5,0	1,0	1,1
704A312006	20	17	10	15	5,0	1,0	1,2
704A312506	25	17	10	15	5,0	1,0	1,2
704A313006	30	17	10	15	5,0	1,0	1,3
704A313506	35	17	10	15	5,0	1,0	1,5
704A314006	40	17	10	15	5,0	1,0	1,6



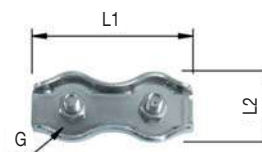


ABRAZADERA DOBLE

AISI 316

ART. NO. CABLE L1 L2 G KG/100

704A570403	3	35	14	M4	1.41
704A570504	4	40	17	M5	2.45
704A570505	5	50	21	M5	2.91
704A570606	6	60	25	M6	5.00

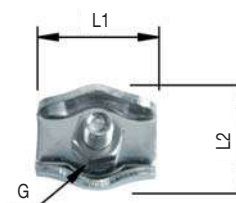


ABRAZADERA SIMPLE

AISI 316

ART. NO. CABLE L1 L2 G KG/100

704A560403	3	17	14	M4	0.72
704A560504	4	20	17	M5	1.27
704A560505	5	25	21	M5	1.46
704A560606	6	30	25	M6	2.52

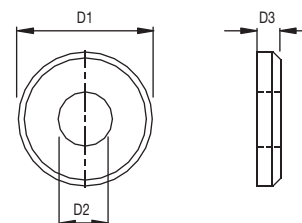


TAPA DECORATIVA

Acero inoxidable - AISI 316

ART. NO. D1 D2 D3 KG/100

704A500003	15	5.5	3.0	0.35
704A500004	20	6.5	4.0	0.85
704A500006	25	8.5	4.0	1.30

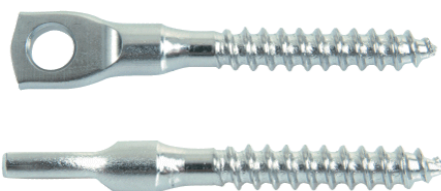
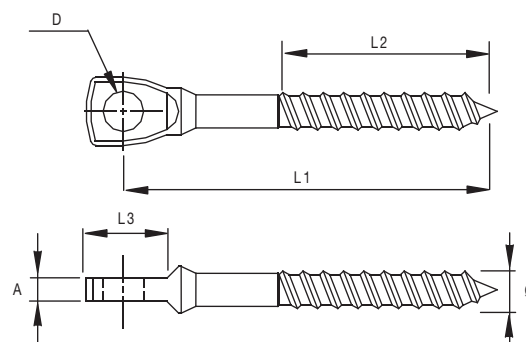


CÁNCAMO

Acero inoxidable - AISI 304

ART. NO. L1 L2 L3 A Ø D KG/100

704A433553	48	24	12	3.0	5	5.3	0.78
704A434063	60	35	13	3.8	6	6.3	1.32





GUARDACABOS CORAZÓN

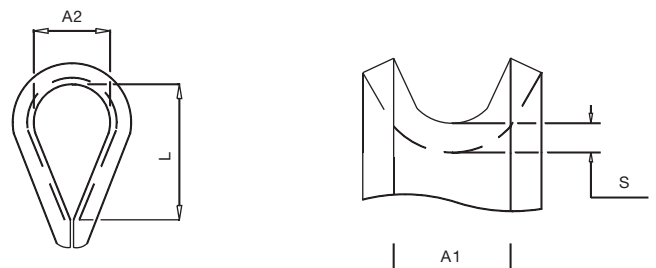
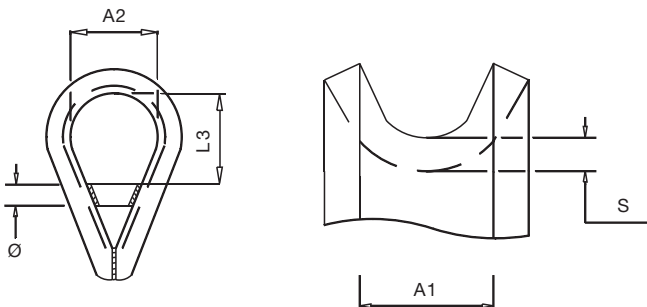
Acero inoxidable pulido - **AISI 316**

ART. NO.	A1	A2	L3	Ø	S	KG/100
704119909	10	24.0	24.0	6	2	3.2
704119910	11	27.0	27.0	8	3	5.9
704119912	14	29.0	29.0	8	3	6.3
704119914	16	32.0	32.0	10	3	12.3
704119916	18	40.0	40.0	10	3	13.6
704119918	20	45.0	45.0	12	4	24.0
704119920	22	50.0	50.0	12	4	34.8
704119922	24	56.0	56.0	16	5	51.8
704119926	28	60.0	60.0	16	6	85.6

GUARDACABOS

Acero inoxidable pulido - **AISI 316**

ART. NO.	A1	A2	L	S	KG/100
704110002	3	9.0	17	1	0.2
704110003	4	10.0	18	1	0.3
704110004	5	11.0	20	1	0.5
704110005	6	13.0	21	1	0.7
704110006	7	15.0	27	2	1.2
704110007	8	19.0	33	2	1.5
704110008	9	22.0	38	2	2.7
704110009	10	24.0	41	2	3
704110010	11	27.0	48	3	5
704110012	14	29.0	53	3	6
704110014	16	32.0	57	3	11
704110016	18	40.0	67	3	12
704110018	20	45.0	75	4	22
704110020	22	50.0	80	4	32
704110022	24	56.0	90	5	47
704110026	28	70.0	112	6	80
704110028	30	75.0	120	6	110
704110032	34	95.0	152	6	156
704110034	36	100.0	160	6	176
704110036	38	110.0	176	6	192
704110038	40	115.0	184	8	292
704110040	42	120.0	192	8	320
704110042	45	150.0	240	8	364

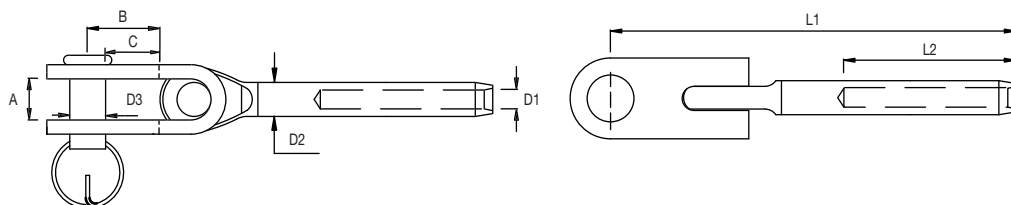




TERMINAL TOGGLE

Acero inoxidable pulido - AISI 316

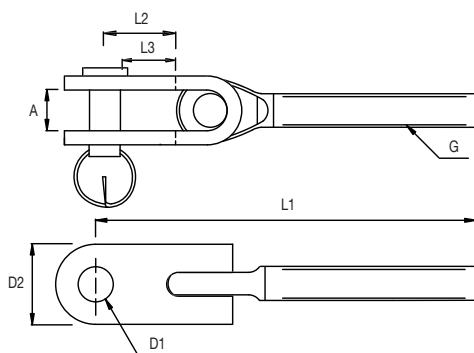
ART. NO	CABLE	DIM.	D1	D2	D3	L1	L2	A	B	C	B.L. KG	KG/100
500603	3	1/8"	3.5	6.4	6.4	81	38	10	16	12.8	1300	4.3
500804	4	5/32"	4.4	7.5	8.0	94	45	11	19	15.0	2350	7.3
509505	5	3/16"	5.3	9.0	9.5	116	51	13	25	20.3	3500	13.8
501106X	6	-	6.5	12.6	11.0	135	64	15	25	19.5	4100	27.3
501206X	6	-	6.5	12.6	12.7	151	64	18	31	24.7	6200	33.4
501207X	7	9/32"	7.5	14.2	12.7	157	70	18	31	24.7	6200	35.7
501308	8	5/16"	8.4	16.0	12.7	170	83	18	31	24.7	6200	37.5
501608X	8	5/16"	8.4	16.0	15.9	198	83	20	37	29.0	9800	59.7
501610	10	-	10.5	17.8	15.9	192	89	20	37	29.0	9800	64.3
501910X	10	-	10.5	17.8	19.0	228	100	24	42	32.5	13000	100.0
501912X	12	-	12.5	21.4	19.0	240	120	24	42	32.5	13000	103.0
502214	14	-	14.8	25.0	22.0	277	140	26	46	34.9	17000	170.2
502516	16	5/8"	17.0	28.0	25.4	313	160	29	53	40.3	24000	265.5
502819	19	3/4"	20.0	34.5	28.0	399	200	34	60	46.5	25500	612.0
503222	22	7/8"	23.5	40.4	32.0	463	230	40	70	54.0	31000	570.0
503526	26	1"	27.5	46.0	36.0	518	280	44	80	62.0	43000	750.0



TOGGLE ROSCADO

Acero inoxidable pulido - AISI 316

NO. DRCHA.	NO. IZQDA.	G	A	D1	D2	L1	L2	L3	B.L. KG	KG/100
023206B	033206B	M6	8	6.0	14	88	16.0	13	1300	5.0
023208B	033208B	M8	10	8.0	18	105	21.0	16	2350	8.3
023210B	033210B	M10	12	9.5	22	128	26.3	22	3500	15.4
023212XB	033212XB	M12	18	12.7	30	154	33.4	27	5400	30.5
023214B	033214B	M14	18	12.7	30	172	34.6	28	5400	33.3
023216XB	033216XB	M16	20	16.0	35	199	37.0	29	8000	63.0
023220XB	033220XB	M20	24	19.0	40	230	39.5	30	13000	111.0

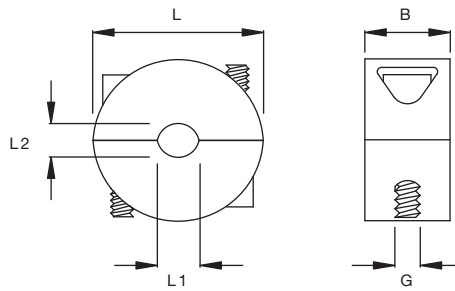




TOPE

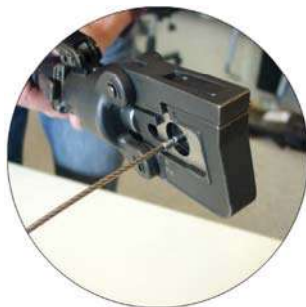
Acero inoxidable - AISI 304

ART. NO.	CABLE	G	L	L1	L2	B	CARGA	KG/100
A650003	3	M3	15	3	2.5	10	100 kg	1.4
A650004	4	M3	15	4	3.0	10	100 kg	1.4
A650005	5	M3	20	5	4.0	10	100 kg	2.1
A650006	6	M3	20	6	5.0	10	100 kg	2.1
A650008	8	M4	23	8	7.0	12	150 kg	2.6



ÚTIL DE PRENSAR

ART. NO.	DIÁMETRO DEL CABLE	DIÁMETRO PRENSA	KG/1
704TOOL1	3,0 - 6,0 MM	5,5 - 9,0 MM	5





MÁQUINA DE PRENSAR

ART. NO. 704TOOL2

Características técnicas

Adecuado para prensar cables de diámetros: 3-4-5-6 mm

Prensado de diámetros 5,5 a 9 mm

Peso 3,2 kg incluido batería

Batería 12 V 2200mAh

Cargador de batería

Cabezal giratorio 180°

Fuerza de prensado 5,5 kN

Click avisador cuando la prensada está finalizada

Diseño ergonómico, manejable con una sola mano

Certificación CE

